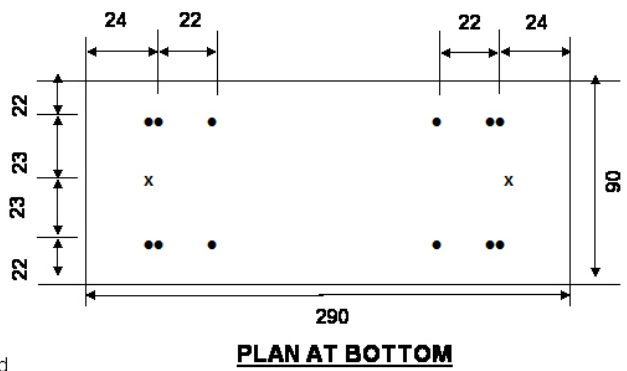
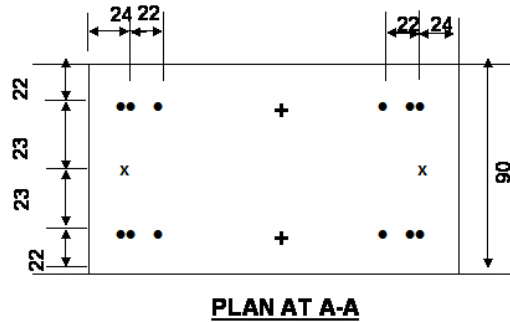
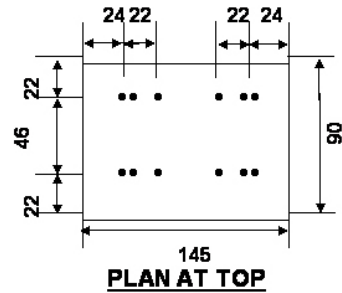
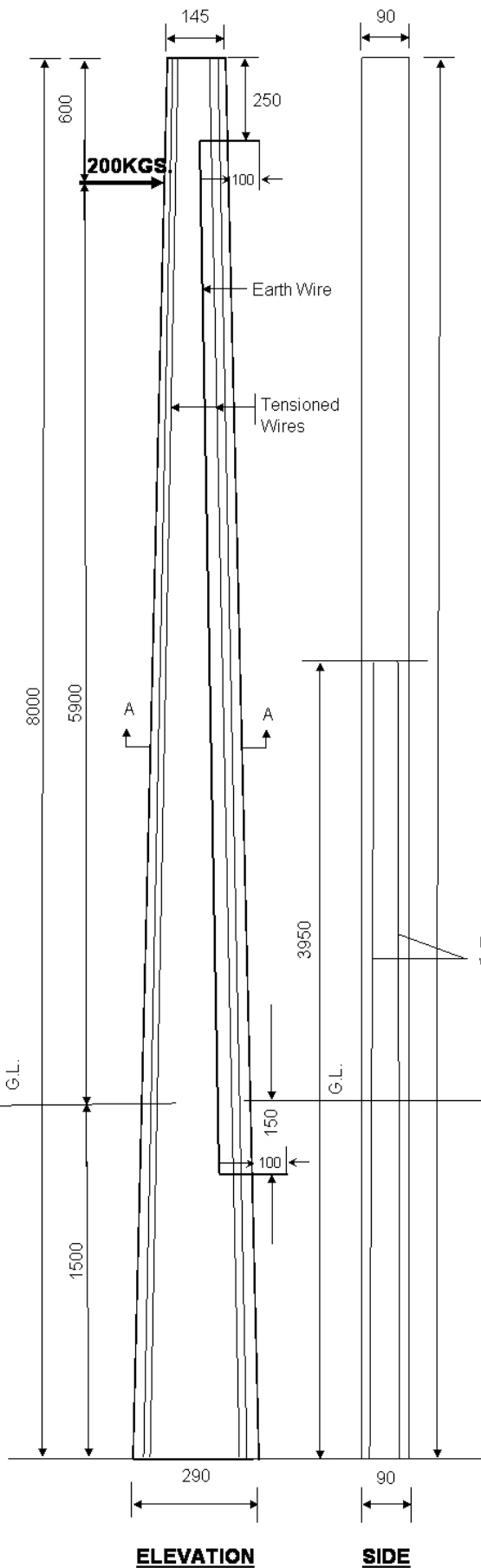


REINFORCEMENT DETAILS OF 8.0M/200KG PRESTRESSED CEMENT CONCRETE POLES (FACTOR OF SAFETY = 2.5)



Location of holes as per REC Standards
 • Denotes Tensioned Wire
 x Denotes Untensioned Wire
 + Possible Position of Earth Wire

TECHNICAL GUARANTEE PARTICULARS OF 8.0mtr/200KG WORKING LOAD

SECTION:	
A). TOP	145 X 90 MM
B). BOTTOM	290 X 90 MM
QUANTITY OF CONCRETE	0.157M ³
CONCRETE GRADE	M-420
OVERALL LENGTH SUPPORT	8.0 MTR
PLANTING DEPTH	1.5 MTR
DIA METER OF PRESTRESSING WIRE	4 MM
NUMBER OF TENSIONED WIRES	12 NOS
NUMBER OF UNTENSIONED WIRES	2 NOS
PRE-TENSIONED APPLIED TO EACH 4MM WIRE	1760KGS
MINIMUM CUBE STRENGTH OF CONCRETE AT 28 DAYS	420 KG/CM ²
CLEAR COVER	20 MM
FACTOR OF SAFETY	2.5
WORKING LOAD	200 KGS
ULTIMATE LOAD	500 KGS
WEIGHT OF POLE (THEORITICAL)	380 KGS
LOAD APPLICATION AT A POINT FROM THE TOP	600 MM
UNTIMATE TENSION STRENGTH FOR 4MM WIRE	17500KG/CM ²
<u>ALL DIMENSIONS ARE IN mm - NOT TO SCALE</u>	